

CLEMRO

VIBRATING GRIZZLY

FEEDERS



EXTRA HEAVY DUTY



STANDARD

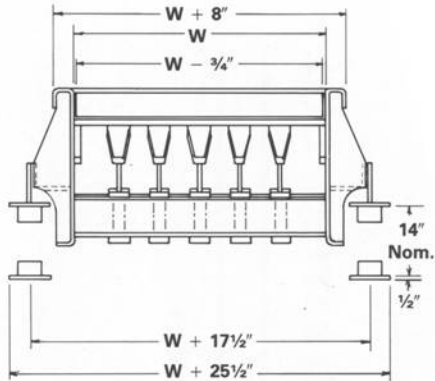
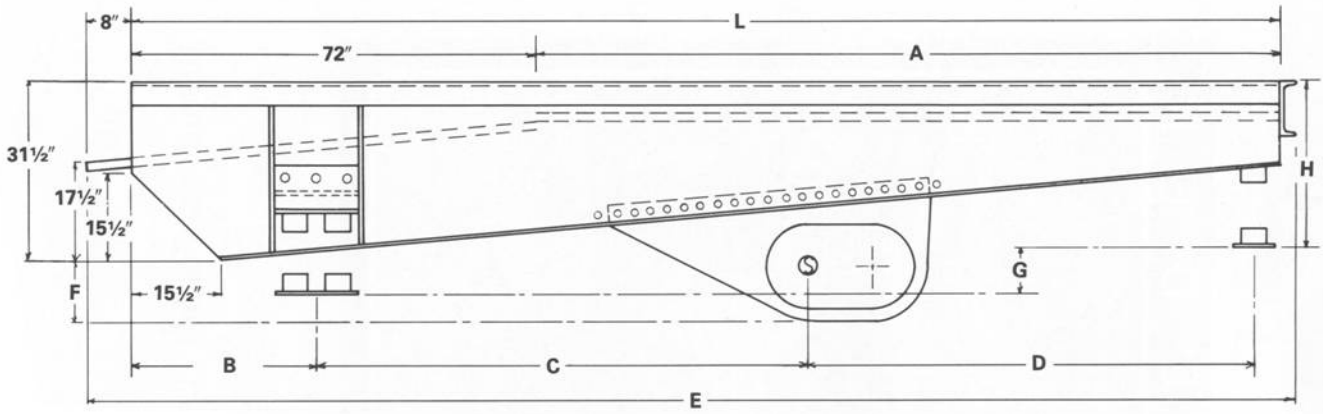


CLEMRO **Western Ltd.**

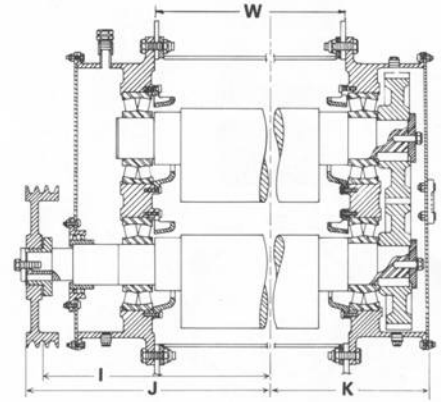
8242-30 STREET S.E., CALGARY, ALBERTA, CANADA T2C 1H8
PHONE: (403) 279-3877 FAX: (403) 236-0186 www.clemro.com



Vibrating Grizzly Feeders



800 RPM Nominal Speed
 3C160E Drive Sheave (Supplied)
 3C75E Motor Sheave
 3C Powerband Belt



APPROXIMATE DIMENSIONS

MODEL	VIB. UNIT	W	L	A	B	C	D	E	F	G	H	I	J	K	MOTOR		APPROX. WEIGHT	SPRINGS	
															HP	RPM		FRONT	BACK
3x14	90	38	168	96	33	74 ³ / ₄	55 ¹ / ₄	178 ³ / ₈	9 ³ / ₄	7 ⁷ / ₈	29 ⁵ / ₈	29 ¹ / ₂	31 ¹ / ₄	26	20	1800	5900	4	4
3x17	90	38	204	132	33	90	76	214 ⁵ / ₈	10 ³ / ₈	7 ⁷ / ₈	29 ⁵ / ₈	29 ¹ / ₂	31 ¹ / ₄	26	20	1800	7200	4	5
4x14	90	50	168	96	33	74 ³ / ₄	55 ¹ / ₄	178 ³ / ₈	9 ³ / ₄	7 ⁷ / ₈	29 ⁵ / ₈	35 ¹ / ₂	37 ¹ / ₄	32	25	1800	7050	4	5
4x17	90	50	204	132	33	90	76	214 ⁵ / ₈	10 ³ / ₈	7 ⁷ / ₈	29 ⁵ / ₈	35 ¹ / ₂	37 ¹ / ₄	32	30	1800	8150	4	6
4x20	110	50	240	168	48	94 ¹ / ₂	93 ¹ / ₂	251	16	5	32 ¹ / ₂	37	38 ³ / ₄	33 ¹ / ₂	40	1800	9600	6	7
5x17	110	63	204	132	33	79	88	215	16 ⁵ / ₈	5	32 ¹ / ₂	43 ¹ / ₂	45 ¹ / ₄	40	40	1800	11350	6	8
5x20	110	63	246	168	48	94 ¹ / ₂	93 ¹ / ₂	251	16	5	32 ¹ / ₂	43 ¹ / ₂	45 ¹ / ₄	40	50	1800	14250	6	8
5x23	110	63	276	204	48	112 ¹ / ₂	111 ¹ / ₂	287	16 ⁵ / ₈	5	32 ¹ / ₂	43 ¹ / ₂	45 ¹ / ₄	40	50	1800	15400	6	8

Other Sizes and Styles On Request

- Twin Shaft Vibrator Unit
- Heat Treated Helical Gears
- One Piece Formed Side Plates
- 1" Main Deck Plate
- Wide Flange Beam Cross Members
- 3/8" A.R. Plate Bolted to Wear Surfaces
- 1 1/4" A.R. Plate Adjustable Grizzly Bars
- Grade 8 Bolts Throughout



8242 30 Street S.E., Calgary, Alberta, Canada T2C 1H8
 Phone: (403) 279-3877 Fax: (403) 236-0186 www.clemro.com

